

# \$615,850 - 435 Chelsea Port Crossing, Chestermere

MLS® #A2207125

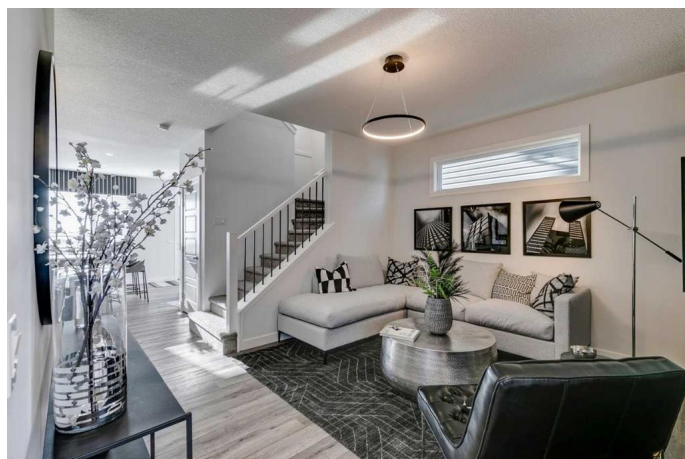
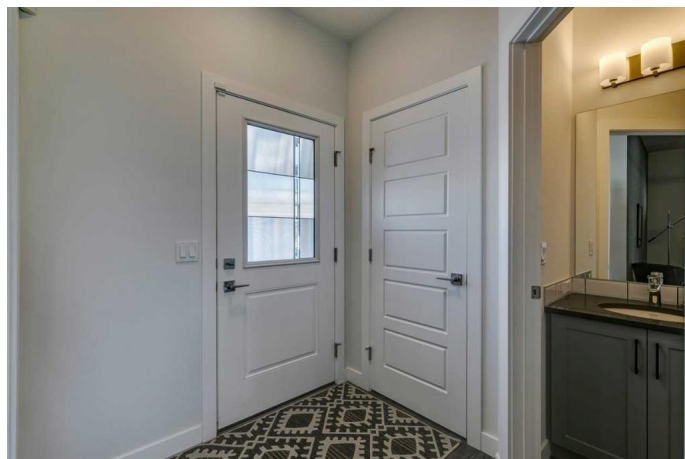
**\$615,850**

3 Bedroom, 3.00 Bathroom, 1,653 sqft

Residential on 0.08 Acres

Chelsea\_CH, Chestermere, Alberta

Welcome to the Onyx â€” a stunning home offering both style and functionality. Built by a trusted builder with over 70 years of experience, this home showcases on-trend, designer-curated interior selections tailored for a custom feel. Featuring a full suite of smart home technology, this home includes a programmable thermostat, ring camera doorbell, smart front door lock, smart and motion-activated switchesâ€”all seamlessly controlled via an Amazon Alexa touchscreen hub. Stainless Steel Washer and Dryer and Open Roller Blinds provided by Sterling Homes Calgary at no extra cost! \$2,500 landscaping credit is also provided by Sterling Homes Calgary. The chef-inspired kitchen features stainless steel appliances, a chimney hood fan, a gas range, and a walk-in pantry with a French door. The main floor includes a versatile den/flex room and is finished with durable LVP flooring throughout the main floor and wet areas. Upstairs, enjoy a spacious bonus room and additional windows that fill the home with natural light. The primary bedroom offers a walk-in closet and a 3-piece ensuite with a fiberglass base shower with tiled walls. Quartz countertops with undermount sinks are featured throughout the home. The basement boasts larger windows and a side entrance, ready for your future plans. The Onyx is perfect for modern living! Plus, your move will be stress-free with a concierge service provided by Sterling Homes Calgary that handles all your moving essentialsâ€”even



providing boxes! Photos are a representative.

Built in 2024

**Essential Information**

MLS® #	A2207125
Price	\$615,850
Bedrooms	3
Bathrooms	3.00
Full Baths	2
Half Baths	1
Square Footage	1,653
Acres	0.08
Year Built	2024
Type	Residential
Sub-Type	Detached
Style	2 Storey
Status	Active

**Community Information**

Address	435 Chelsea Port Crossing
Subdivision	Chelsea_CH
City	Chestermere
County	Chestermere
Province	Alberta
Postal Code	T1X2P4

**Amenities**

Parking Spaces	4
Parking	Parking Pad

**Interior**

Interior Features	Kitchen Island, Open Floorplan, Pantry, Separate Entrance, Smart Home, Tankless Hot Water, Walk-In Closet(s), French Door
Appliances	Dishwasher, Microwave, Range Hood, Refrigerator, Tankless Water Heater, Gas Range
Heating	Forced Air, Natural Gas
Cooling	None
Has Basement	Yes

Basement                      Full, Unfinished

**Exterior**

Exterior Features      None  
Lot Description        Back Lane  
Roof                      Asphalt Shingle  
Construction          Stone, Vinyl Siding, Wood Frame  
Foundation            Poured Concrete

**Additional Information**

Date Listed              March 31st, 2025  
Days on Market        106  
Zoning                    TBD

**Listing Details**

Listing Office            Bode Platform Inc.

Data is supplied by Pillar 9â„¢ MLS® System. Pillar 9â„¢ is the owner of the copyright in its MLS® System. Data is deemed reliable but is not guaranteed accurate by Pillar 9â„¢. The trademarks MLS®, Multiple Listing Service® and the associated logos are owned by The Canadian Real Estate Association (CREA) and identify the quality of services provided by real estate professionals who are members of CREA. Used under license.