

\$469,900 - 140 Templehill Drive Ne, Calgary

MLS® #A2218870

\$469,900

4 Bedroom, 2.00 Bathroom, 829 sqft

Residential on 0.06 Acres

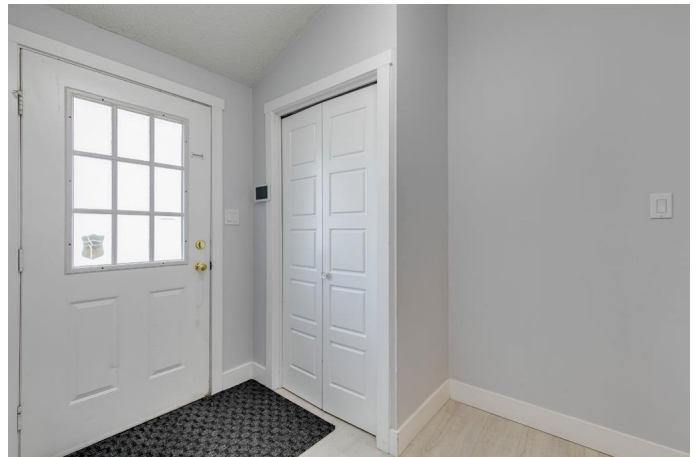
Temple, Calgary, Alberta

MOVE-IN READY 3 level split home in a convenient ,family friendly neighbourhood of TEMPLE. Super clean 4bedroom home with loads of nice features ,good quality flooring on all levels, HUGE living room and UPDATED kitchen with QUARTZ countertops, stainless steel appliances and updated bathrooms...ROOF, WINDOWS, FENCE and interior doors, lighting fixtures and trim are all done year 2021...Upstairs you will find 2 good size bedrooms & full bath bathroom. The lower level is a walkout to ground level, fully developed, with 2 beds and full bath. Close to schools, parks, playgrounds, transit access, and shopping centres. Book your showing now!

Built in 1978

Essential Information

MLS® #	A2218870
Price	\$469,900
Bedrooms	4
Bathrooms	2.00
Full Baths	2
Square Footage	829
Acres	0.06
Year Built	1978
Type	Residential
Sub-Type	Semi Detached
Style	3 Level Split, Side by Side



Status	Active
--------	--------

Community Information

Address	140 Templehill Drive Ne
Subdivision	Temple
City	Calgary
County	Calgary
Province	Alberta
Postal Code	T1Y4C3

Amenities

Parking Spaces	2
Parking	Carport, Off Street

Interior

Interior Features	Quartz Counters
Appliances	Dishwasher, Electric Stove, Range Hood, Refrigerator, Washer/Dryer
Heating	Forced Air, Natural Gas
Cooling	None
Has Basement	Yes
Basement	Finished, Full

Exterior

Exterior Features	Private Yard
Lot Description	Back Lane, Back Yard, Lawn, Rectangular Lot
Roof	Asphalt Shingle
Construction	Asphalt
Foundation	Poured Concrete

Additional Information

Date Listed	May 9th, 2025
Days on Market	47
Zoning	R-C2

Listing Details

Listing Office	Property Solutions Real Estate Group Inc.
----------------	---

Data is supplied by Pillar 9â„¢ MLS® System. Pillar 9â„¢ is the owner of the copyright in its MLS® System. Data is deemed reliable but is not guaranteed accurate by Pillar 9â„¢. The trademarks MLS®, Multiple Listing Service® and the associated logos are owned by The Canadian Real Estate Association (CREA) and identify the quality of services provided by real estate professionals who are members of CREA. Used under license.