

\$250,000 - 1609, 924 14 Avenue Sw, Calgary

MLS® #A2226138

\$250,000

2 Bedroom, 1.00 Bathroom, 872 sqft

Residential on 0.00 Acres

Beltline, Calgary, Alberta

DORCHESTER SQUARE! VACANT! Large south-facing 2-bedroom unit on 16th floor (near the top). Over 870 sq ft condo with a titled parking spot (#86)â€”in-suite storage. Close to all amenities, shops, restaurants, 17th ave, and walking distance to DT. This building is well managed and no Airbnb! The building offers, fitness centre, squash courts, a social/games room, and a super large laundry room on the second floor. Easy to view! **VACANT!**

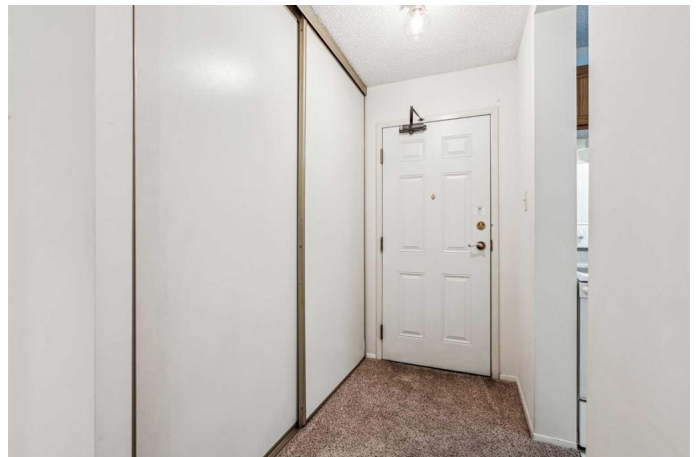
Built in 1978

Essential Information

MLS® #	A2226138
Price	\$250,000
Bedrooms	2
Bathrooms	1.00
Full Baths	1
Square Footage	872
Acres	0.00
Year Built	1978
Type	Residential
Sub-Type	Apartment
Style	Single Level Unit
Status	Active

Community Information

Address	1609, 924 14 Avenue Sw
Subdivision	Beltline



City	Calgary
County	Calgary
Province	Alberta
Postal Code	T2R 0N7

Amenities

Amenities	Coin Laundry, Elevator(s), Fitness Center, Parking, Party Room
Parking Spaces	1
Parking	Heated Garage, Parkade, Stall, Titled, Underground, Enclosed
# of Garages	1

Interior

Interior Features	No Animal Home, No Smoking Home
Appliances	Dishwasher, Electric Stove, Range Hood, Refrigerator, Window Coverings
Heating	Baseboard, Natural Gas
Cooling	None
# of Stories	19

Exterior

Exterior Features	Balcony
Roof	Tar/Gravel
Construction	Brick
Foundation	Poured Concrete, Other

Additional Information

Date Listed	May 29th, 2025
Days on Market	20
Zoning	CC-MH

Listing Details

Listing Office	4th Street Holdings Ltd.
----------------	--------------------------

Data is supplied by Pillar 9â„¢ MLSÂ® System. Pillar 9â„¢ is the owner of the copyright in its MLSÂ® System. Data is deemed reliable but is not guaranteed accurate by Pillar 9â„¢. The trademarks MLSÂ®, Multiple Listing ServiceÂ® and the associated logos are owned by The Canadian Real Estate Association (CREA) and identify the quality of services provided by real estate professionals who are members of CREA. Used under license.