

\$829,900 - 452 Parkridge Rise Se, Calgary

MLS® #A2234354

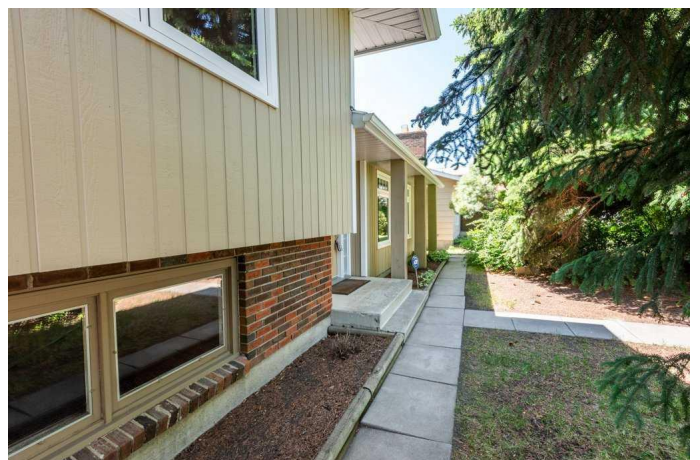
\$829,900

4 Bedroom, 2.00 Bathroom, 1,489 sqft

Residential on 0.14 Acres

Parkland, Calgary, Alberta

Truly a fantastic home and location in a quiet cul-de-sac. This "Timberlane" home, the largest of the 4-level splits, has great exterior appeal, with newer Canexel siding, windows, eaves and downspouts, and a new roof membrane and shingles installed in 2021, all within an English garden setting with tons of perennials and trees for privacy providing a tranquil oasis to come home to. Entering the home you will be impressed with the clean, wide open feel and the huge combined living and dining rooms, the hardwood flooring and the open stairwell to the upper level. A bright renovated, fully equipped kitchen and large nook with brick surround fireplace overlook the tranquility of the south/west exposure backyard, complete with patio for outdoor summer dining and entertaining. Three bedrooms are nestled on the upper level: a large primary bedroom with an entire wall dedicated to closet space and a 3-piece ensuite, and two kids' bedrooms and an updated 4-piece bathroom. The lower level has large newer windows, a bright rec room/family room, a fourth bedroom, and a roughed-in bathroom. The basement is wide open undeveloped space, with painted walls and floors, furnace area to one corner and plenty of room for the buyers to create whatever they need or desire. For the garage enthusiast, a bright, oversized, fully insulated, drywalled, double garage/shop in the back with two overhead doors and a heavily reinforced concrete slab sloped 4 inches over



24 feet to allow for easy wash-out. Wired with two dedicated 220-volt receptacles. Parkland, a desirable family community with private, gated community park. Amenities include splash park, playground, tennis and pickleball courts, basketball, disc golf course, winter skating by the fire pit, hockey rinks, and soccer/football fields with annual community activities and events like Summerfest, concerts in the park and more! Enjoy neighbouring Fish Creek Provincial Park, one of the largest urban parks in North America; walk or bike along the many trails, relax by the meandering creek and take in the expansive mountain views, or stroll down to the Bow Valley Ranch heritage site and stop for dinner or lunch, or grab a snack at Annie's and visit the Artisan Gardens. Quick, easy access to Deerfoot Trail highway into downtown or hop the bus and ride the LRT. Plenty of shopping areas nearby. Great home and location: Truly a must-see...

Built in 1976

Essential Information

| | |
|----------------|---------------|
| MLS® # | A2234354 |
| Price | \$829,900 |
| Bedrooms | 4 |
| Bathrooms | 2.00 |
| Full Baths | 2 |
| Square Footage | 1,489 |
| Acres | 0.14 |
| Year Built | 1976 |
| Type | Residential |
| Sub-Type | Detached |
| Style | 4 Level Split |
| Status | Active |

Community Information

Address 452 Parkridge Rise Se

| | |
|-------------|----------|
| Subdivision | Parkland |
| City | Calgary |
| County | Calgary |
| Province | Alberta |
| Postal Code | T2J5C3 |

Amenities

| | |
|----------------|--|
| Amenities | Park |
| Parking Spaces | 2 |
| Parking | Double Garage Detached, Insulated, Oversized |
| # of Garages | 2 |

Interior

| | |
|-------------------|---|
| Interior Features | Bathroom Rough-in |
| Appliances | Dishwasher, Dryer, Electric Stove, Refrigerator, Washer, Window Coverings |
| Heating | Forced Air |
| Cooling | None |
| Fireplace | Yes |
| # of Fireplaces | 1 |
| Fireplaces | Wood Burning |
| Has Basement | Yes |
| Basement | Finished, Full, Unfinished |

Exterior

| | |
|-------------------|----------------------------------|
| Exterior Features | Playground, Private Yard |
| Lot Description | Back Lane, Back Yard, Cul-De-Sac |
| Roof | Asphalt Shingle |
| Construction | Composite Siding, Wood Frame |
| Foundation | Poured Concrete |

Additional Information

| | |
|----------------|-----------------|
| Date Listed | June 26th, 2025 |
| Days on Market | 35 |
| Zoning | R-CG |
| HOA Fees | 200 |
| HOA Fees Freq. | ANN |

Listing Details

Data is supplied by Pillar 9â„¸ MLSÂ® System. Pillar 9â„¸ is the owner of the copyright in its MLSÂ® System. Data is deemed reliable but is not guaranteed accurate by Pillar 9â„¸. The trademarks MLSÂ®, Multiple Listing ServiceÂ® and the associated logos are owned by The Canadian Real Estate Association (CREA) and identify the quality of services provided by real estate professionals who are members of CREA. Used under license.